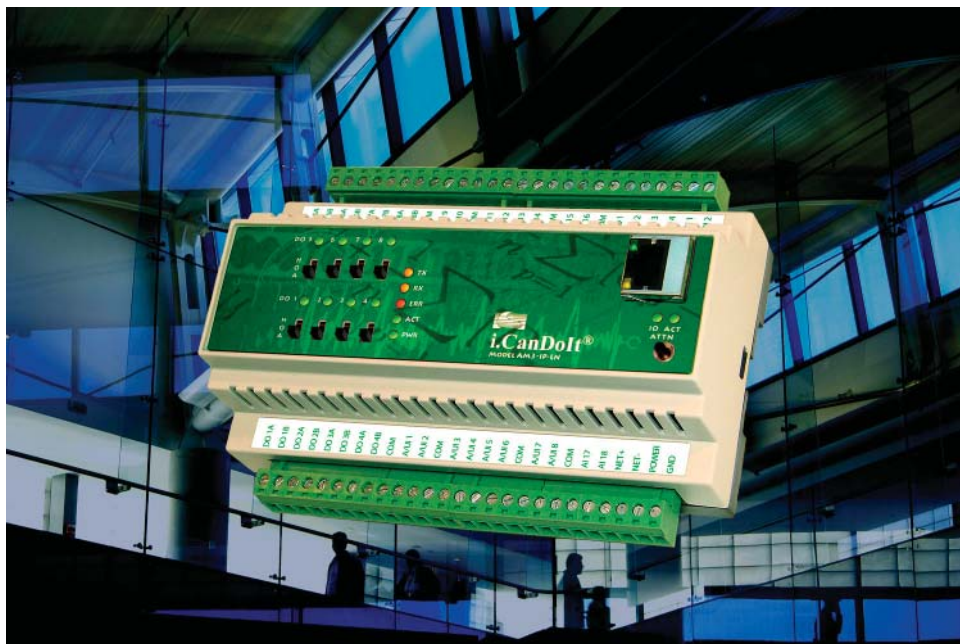


*AddMe® III*  
*i.CanDoIt®*



**CONTROL SOLUTIONS, INC.**  
MINNESOTA



## *AddMe III*

*32 I/O Points in a  
Modbus Client/Server*

*18 Analog/Universal Inputs  
4 Analog Outputs  
8 Discrete (Relay) Outputs  
2 Pulse/Discrete Inputs  
RTU Gateway*

*Scheduling  
Astronomical Clock  
Data Logging  
Event Notification*

## *i.CanDoIt® AddMe III*

Control Solutions' i.CanDoIt® Advanced AddMe III includes all of the features of AddMe II plus a lot more. AddMe III features 18 universal context sensitive inputs. When configured as an analog input, the continuously self-calibrating sigma-delta converter produces 15-bit resolution with high noise immunity. When configured as a discrete input, the converter switches to 8-bit resolution at 128 samples per second for fast response. AddMe III also includes 4 analog outputs, 2 pulse inputs, and 8 Form A relay outputs.

AddMe III includes powerful web based features, including:

- Data logging and event logging, trending
- Email notification and email data log delivery
- Weekly and on-demand real time scheduling
- Astronomical clock and time/date clock
- Template rule generation for traps, emails, output triggers
- Modbus TCP client and server concurrently
- Modbus RTU Master
- Programmability using PL/i structured language
- SNMP v2 agent for Get/Set access to data points
- SNMP trap generation based on rules
- Integral web server with Flash file system
- User designed web pages with CGI access to data points
- Web based configuration and monitoring
- Cell phone friendly event notification capability
- Dynamic DNS support
- DNS host lookup, DHCP
- FTP data file access & firmware upgrades
- Telnet console session for account management
- Web client for server driven remote monitoring

## **FEATURES of Model AM3-IP-MB**

- Web based configuration & operation
- Ethernet 10/100BaseT protocol support  
HTTP • Modbus TCP • SNMP
- RS-485 protocol support
  - Modbus RTU Master
  - LED indicators for TX, RX, error
- User web pages
- Data logging, scheduling, email notifications
- User programmable
- 18 Analog/universal inputs (16 universal + 2 analog only)
  - 0-10VDC, Thermistor, dry contact
  - Software selectable input type (16 channels)
  - 0.1% reference, up to 16-bit resolution
  - Continuously self-calibrating sigma-delta converter
- 4 Analog outputs
  - 4-20mA (0-20mA)
  - 8-bit resolution
- 8 Discrete outputs
  - Form A relay, 5A @ 120VAC
  - HOA switches & status indicators
- 2 Discrete inputs
  - TTL to 24VDC
  - Pulse count frequency input
  - Totalizing count input
- Powered by 18-30VDC or 24VAC 50/60 Hz
- DIN rail mounting, 100mm H x 155mm W x 60mm D
- FCC Class A, CE Mark

***www.csimn.com***

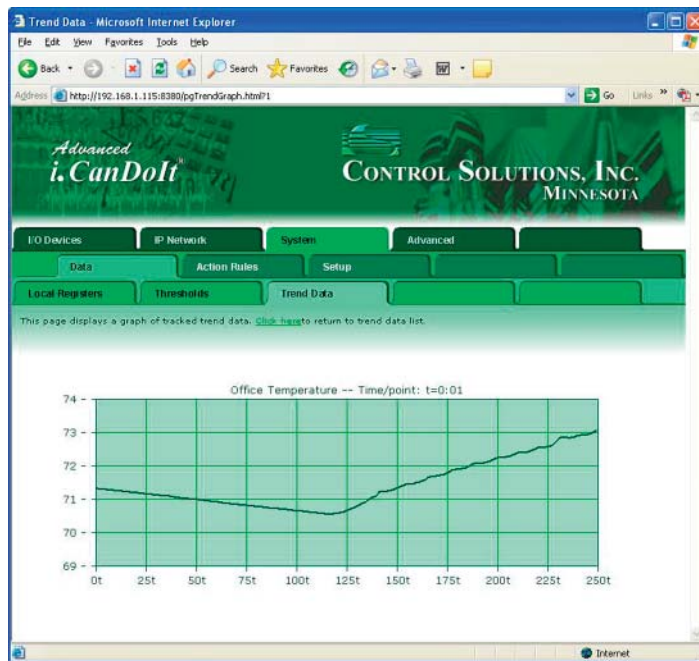
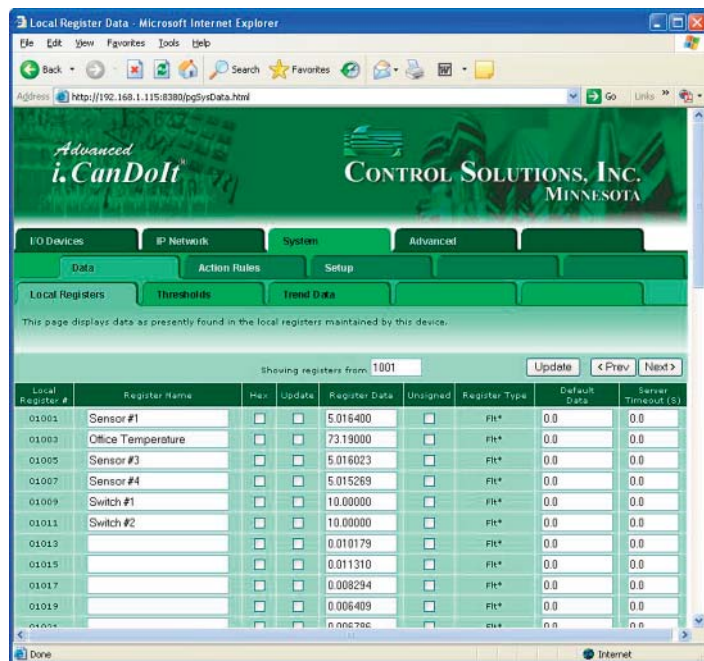


## *i.CanDoIt*® AddMe III

Control Solutions' *i.CanDoIt*® AddMe III packs a lot of I/O with the most commonly used capabilities in our growing family of popular web appliances.

Functions:

- Data Logging
- Remote Monitoring & Alarms
- Event Notification
- Scheduling (Astronomical or Time/Date)
- User Programmable Control Algorithms
- User Programmable Web Pages



*i.CanDoIt*® is available now. Visit [www.csimn.com](http://www.csimn.com) for more information, a guided tour of the web server, and an online demo copy of the entire web site contained in AddMe III.

Visit our web site for

- Full details
- User Guides & Software
- Pricing
- On-line Ordering



[www.csimn.com](http://www.csimn.com)

AddMe Jr. gives you all of the functionality of AddMe III in a smaller package with a lower point count. Visit our web site for more!



**CONTROL SOLUTIONS, INC.**

2179 FOURTH ST., STE. 2-D • PO BOX 10789  
WHITE BEAR LAKE, MN 55110-0789  
VOICE (651) 426-4410 • FAX (651) 426-4418  
TOLL FREE 1-800-872-8613